

Cloud — UV Air Direct

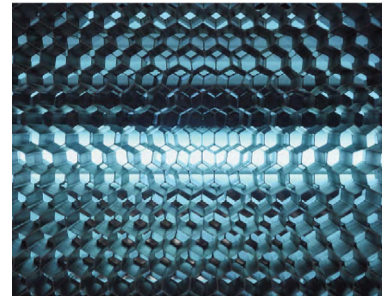
Upper-Air UV Disinfection

KEY FEATURES

The Cloud provides continuous disinfection of the upper air column through convection, thermal, and mechanical air movement within a space and is proven to be safe and effective. Its main features are:

- 18,000 hour ozone-free pure quartz 254nm UV-C lamps
- Mirror finished angled aluminum reflector to eliminate UV exposure below
- Sleek white finish
- All materials are tested to resist intense UV-C radiation
- Specific electronic ballast for UV-C lamps

UV-SAFE DIRECTIONAL FRONT COVER

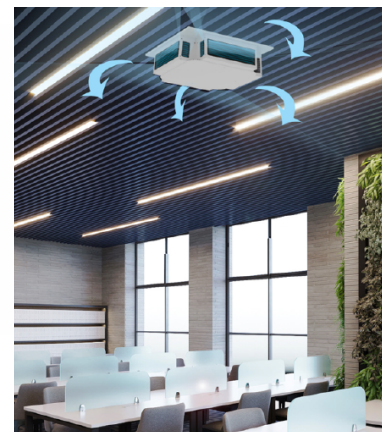


CLOUD LINEAR



CLOUD 360°

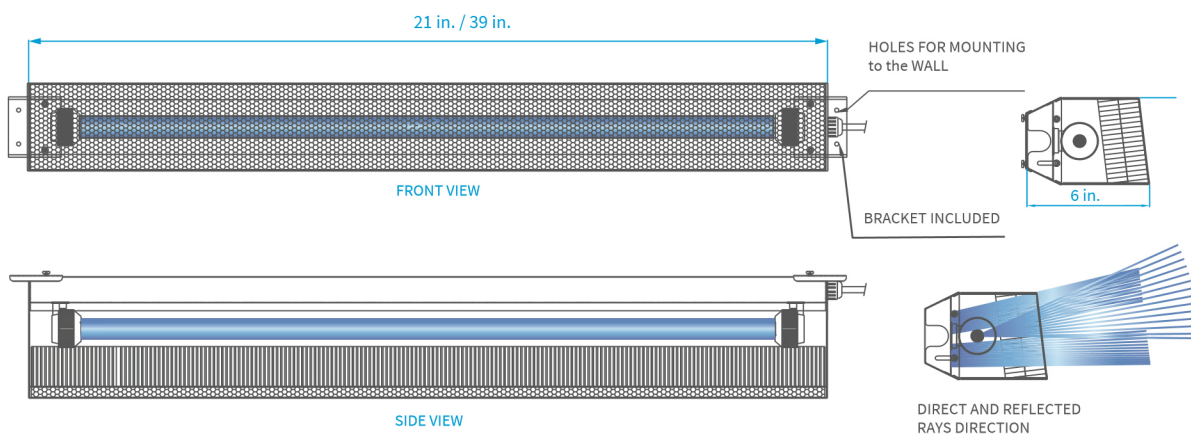
- 360° Beam Pattern



CLOUD LINEAR SPECIFICATIONS

Cloud UV Air Direct	External Dimensions LxWxH (in)	Power (W)	Weight (lbs)	Finish	Recommended ACH (equivalent air changes per hour)	Minimum Mounting Height (ft)
CL-1L-40	21 x 6 x 4.3	40	4.5	White	4 to 6	7.5
CL-1L-75	39 x 6 x 4.3	75	8.8	White	4 to 6	8

CLOUD LINEAR TECHNICAL DRAWINGS



INSTALLATION

To ensure optimal disinfection mount the Cloud Linear facing the middle of the room. The UV-C radiation will be pointed slightly upwards, which will continuously disinfect the air circulating in a room. The Cloud needs to be installed at least 12" from the ceiling. Units will be commissioned to comply with ASHRAE guidelines for upper air disinfection.

HOW TO ORDER

Please specify components below using the letter code in bold to select the desired options.

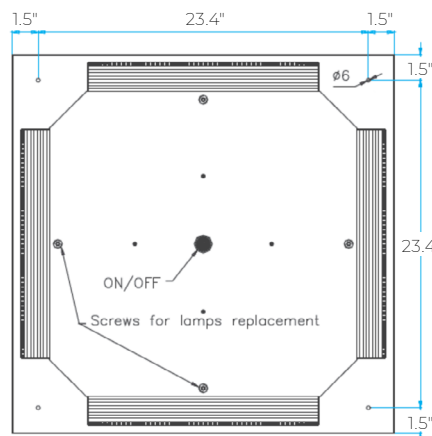
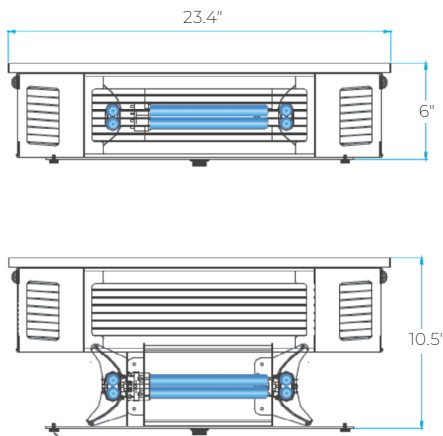
Model	Lamp Configuration	Lamp Type	Application
CL = Cloud Air Direct	1L = with 1 UV-C Lamp	40 = 40W mercury vapor UV-C lamp 75 = 90W mercury vapor UV-C lamp	WL = Wall mounted
Example order: CL-1L-75-WL			

CLOUD 360° SPECIFICATIONS

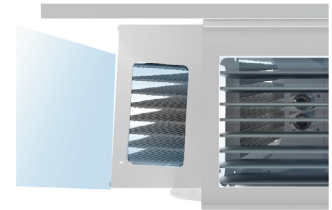
Cloud UV Air Direct	External Dimensions LxWxH (in)	Power (W)	Weight (lbs)	Floor Area Coverage (ft²)*	Finish	Recommended ACH (equivalent air changes per hour)	Minimum Mounting Height (ft)
CL-4L-18	23.4 x 23.4 x 6	72	28.6	Up to 1,000	White	3 to 6	9.5
CL-4L-35	23.4 x 23.4 x 6	140	28.6	Up to 1,300	White	5 to 8	9.5

*UV Power > 10μW/cm²

CLOUD 360° TECHNICAL DRAWINGS



UV-SAFE
DIRECTIONAL
FRONT COVER



INSTALLATION

To ensure optimal disinfection place the Cloud 360° in a central position in your space. The UV-C radiation will be pointed slightly upwards, which will continuously disinfect the air circulating in a room. Units will be commissioned to comply with ASHRAE guidelines for upper air disinfection.

HOW TO ORDER

Please specify components below using the letter code in bold to select the desired options.

Model	Lamp Configuration	Lamp Type	Application
CL = Cloud Air Direct	4L = with 4 UV-C Lamps	18 = 18W mercury vapor UV-C lamp 35 = 35W mercury vapor UV-C lamp	CG = 4 sided unit for ceiling of rooms
Example order: CL-4L-35-CG			